



AECOM  
2090 Palm Beach Lakes Blvd  
Suite 600  
West Palm Beach, FL 33409  
www.aecom.com

561 684 3375 tel  
561 689 8531 fax

Mr. Jason Pierman  
Special District Services, Inc.  
The Oaks Center  
2501A Burns Road  
Palm Beach Gardens, FL 33410

July 9, 2015  
60309395

Subject: Journey's End Community Development District – Annual Report

Dear Mr. Pierman:

AECOM performed a visual inspection of the facilities owned by the Journey's End Community Development District (JECDD) on May 29, 2015. Overall the surface water management system was found to be in working condition. The inspection did not include extraordinary methods such as dewatering, photographic means, etc. due to the expense, and satisfactory appearance and operation of the system.

General maintenance is being performed by the Property Owners Association (POA) in accordance with a high level maintenance Agreement entered into by the JECDD and the POA. It is our understanding that the JECDD maintains an oversight role.

Items identified in last year's report that have been addressed include the following:

1. The erosion protection around the upstream end of the outfall headwall was completed this past year and is in good condition (see Figure 27).
2. The chain link fence located at the outfall control structure between JECDD and Lake Worth Drainage District's (LWDD) L-16 Canal right-of-way has been replaced with a wrought iron fence.
3. The catch basins located in the roadways were clean of trash.

Based on visual inspection and as shown on the attached photographs, some existing JECDD owned facilities are in need of repair or maintenance. Although the system appeared to be in good functioning order, it is recommended that additional maintenance and/or repair be performed in the following areas:

1. All the lakes are currently low as it is the end of the dry season, and it is apparent that several of the lakes' banks have experienced additional erosion since we reported last year. At some locations in excess of a 24" vertical lip was observed due to the low water levels.
2. Implementation of a quarterly maintenance schedule for the storm water control structures, including catch basins and vegetation control around culvert connections within all lakes is recommended. The vegetation was still overgrown at the end of the pipe on one of the Lake 3 interconnects, as reported last year; trash and litter were noted in the catch basins near the clubhouse.



If you have any questions regarding this report, please feel free to call.

Sincerely,

AECOM

Karen D. Brandon, P. E.  
District Engineer

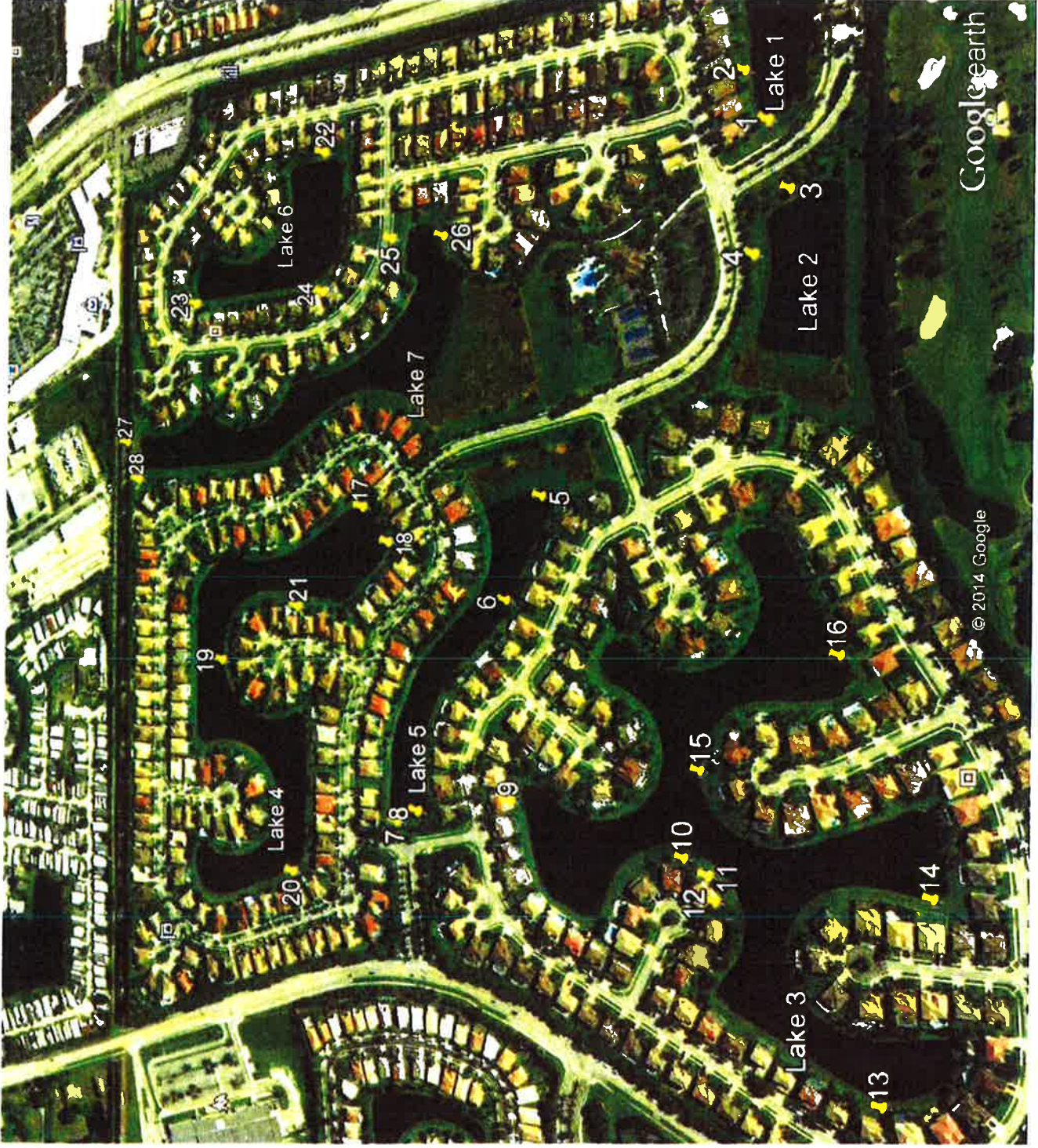
KDB/dw

Encl.

Karen D. Brandon, P.E.  
No. 38579

JUL 09 2015

AECOM Technical Services, Inc.  
No. 8115



Google earth

© 2014 Google

Google earth

feet  
meters

2000  
600



**Journey's End Community Development District Inspection Photographs**



**Figure 1 – West End of Lake 1 Looking East on 05/29/2015**



**Figure 2 – North End of Lake 1 Looking East on 05/29/2015**



**Figure 3 – East End of Lake 2 Looking West on 05/29/2015**



**Figure 4 – North End of Lake 2 Looking Southwest on 05/29/2015**



**Figure 5 – East End of Lake 5 Looking North on 05/29/2015**



**Figure 6 – Looking Northwest of Lake 5 on 05/29/2015**



**Figure 7 – West End of Lake 5 Looking North on 05/29/2015**



**Figure 8 – West End of Lake 5 Looking Southeast on 05/29/2015**



**Figure 9 – North End of Lake 3 Looking West on 05/29/2015**



**Figure 10 – West End of Lake 3 off Kevin Way Looking Northwest on 05/29/2015**





**Figure 11 – West End of Lake 3 off Kevin Way Looking South on 05/29/2015**



**Figure 12 – West End of Lake 3 off Kevin Way Looking South on 05/29/2015**



**Figure 13 – West End of Lake 3 Looking East on 05/29/2015**



**Figure 14 – South End of Lake 3 Looking South on 05/29/2015**



**Figure 15 – South End of Lake 3 off Kristen Way Looking North on 05/29/2015**



**Figure 16 – South End of Lake 3 Looking Northeast on 05/29/2015**



**Figure 17 – East End of Lake 4 Looking Northwest on 05/29/2015**



**Figure 18 – South End of Lake 4 Looking West on 05/29/2015**



**Figure 19 – South End of Lake 4 Looking East on 05/29/2015**



**Figure 20 – Lake 4 at West End Looking Northwest on 05/29/2015**



**Figure 21 – South End of Lake 4 off Wilbur Way Looking North on 05/29/2015**



**Figure 22 – East End of Lake 6 Looking North on 05/29/2015**



**Figure 23 – North End of Lake 6 Looking Southeast on 05/29/2015**



**Figure 24 – West End of Lake 6 Looking South on 05/29/2015**



**Figure 25 – East End of Lake 7 Looking West on 05/29/2015**



**Figure 26 – East End of Lake 7 near Ethan Drive Looking West on 05/29/2015**





**Figure 27 – East End of Lake 7 near JECDD Outfall Structure on 05/29/2015**



**Figure 28 – East End of Lake 7 at Outfall Structure Looking at New Fence on 05/29/2015**